

# Test Your Figure

Xiaoming Wang

Computer Science Department  
Texas A&M University  
College Station, TX USA  
Email: xmwang@tamu.edu

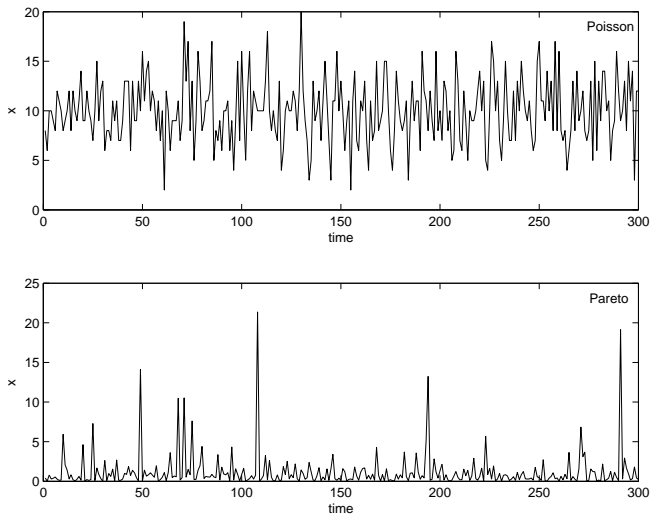


Fig. 1. Comparison of Poisson distribution and Pareto distribution: Random variable  $x$  generated by Poisson distribution with  $\lambda = 10$  (top); Random variable  $x$  generated by Pareto distribution with  $\alpha = 1.5$  (bottom).

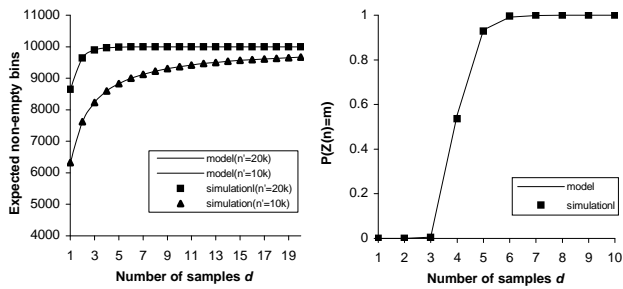


Fig. 2. Comparison of the expected number of non-empty bins to the solution of the model in 1,000 iterations (left). Comparison of the actual probability  $P(Z(n') = m)$  to the solution of the model (right).

## I. TEST FIGURE

Your figure may go like Fig 1 or Fig 2. Fig 1 was generated in Matlab with its native export function for eps format, while Fig 2 was done in Excel with postscript printer.